



Lucy

404110469 Amanda Lin

404110548 Ann Lin

404110160 Ashley Lin

406110293 David Chen

404110328 Erin Lee

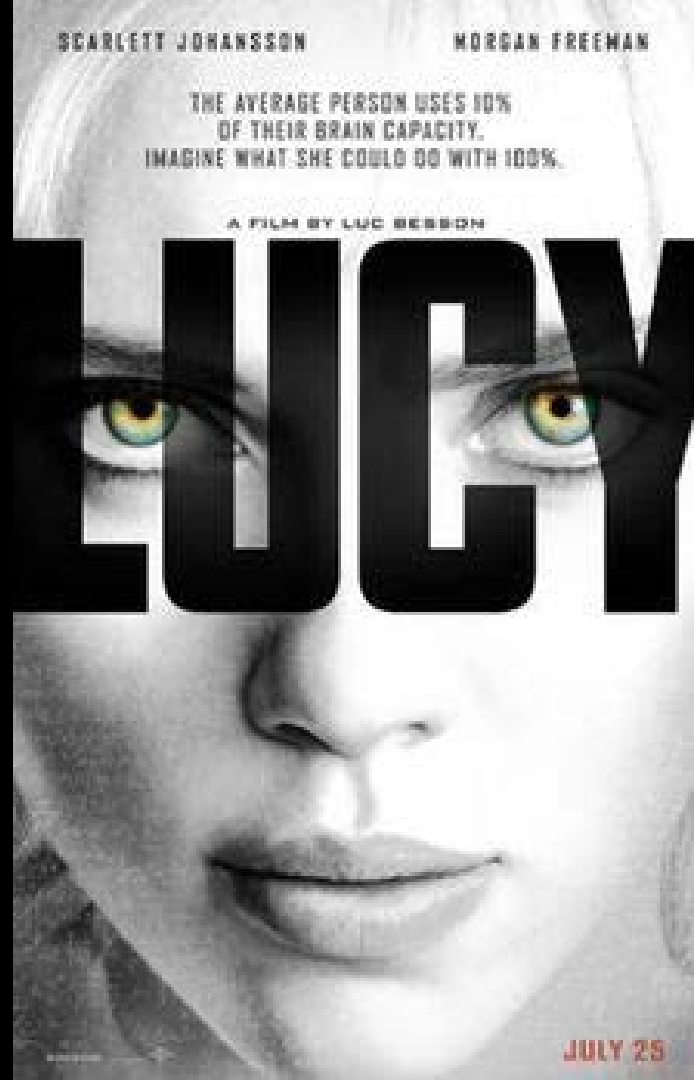
404110366 Helen Su

404110316 Jbanna Chen

Introduction

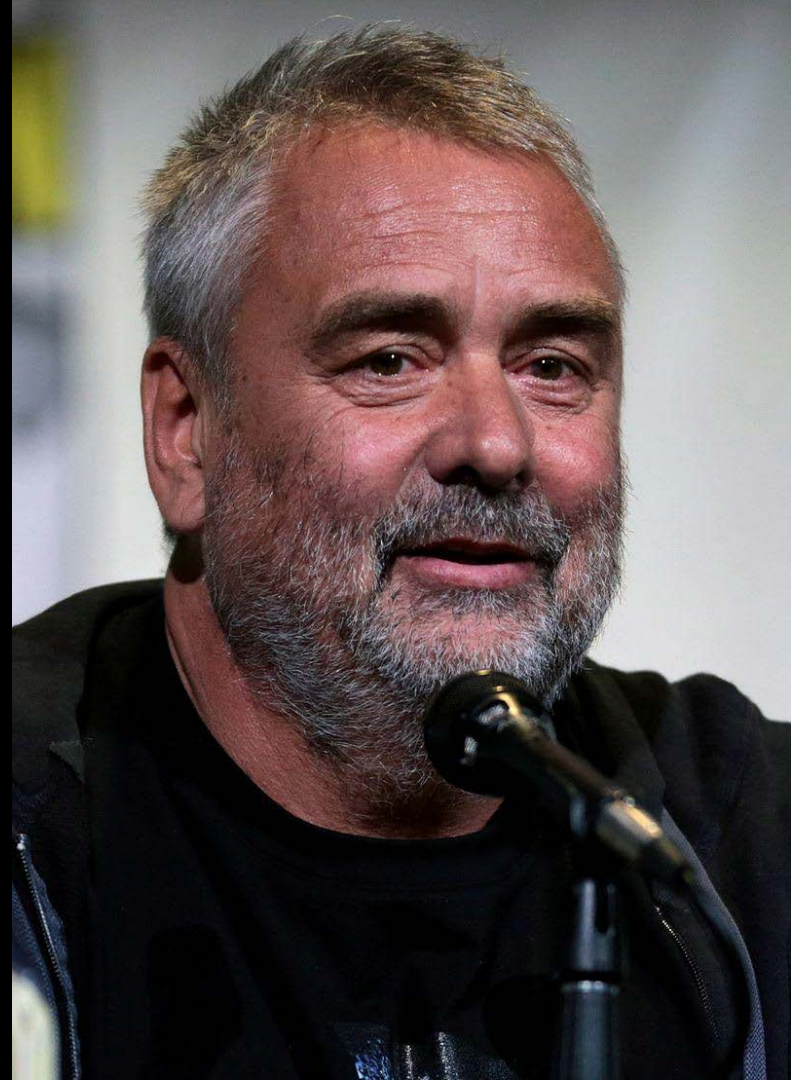
Jbanna Chen

- Director: Luc Besson
- Released in 2014
- Main Cast:
Scarlett Johansson
Morgan Freeman



Luc Besson

- Born in 1959
- Childhood at Mediterranean
- Paris, France



Luc Besson

1988

Mediterranean

Sense of

autobiography

Popular in

Europe



1990

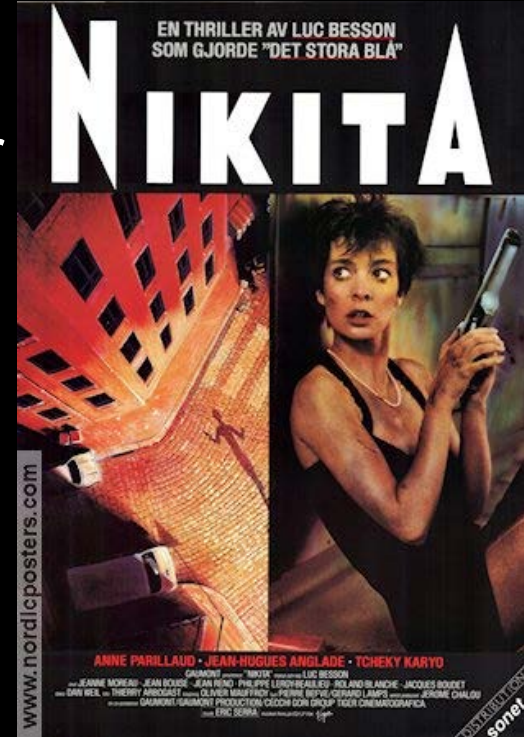
Classic thriller

action movie

Make a hit

around the

world



Luc Besson

1994

Second movie
featured by a
killer
Aestheticization
of violence



1997

A fiction written
at the age 16
Make him a
household
name





Summary

David Chen

Lucy's Development & Main Characters

How All These Started



Characters:

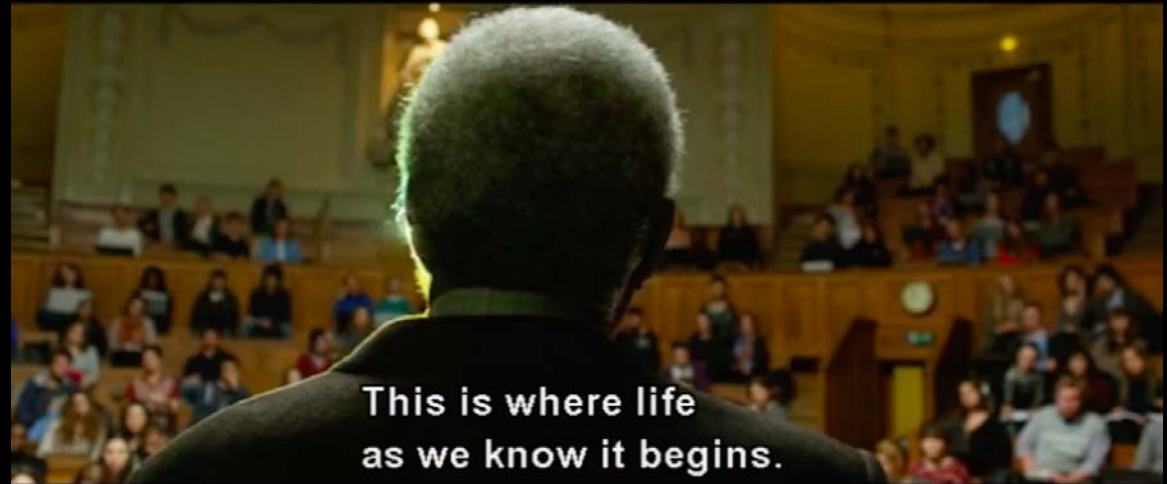
- Lucy
- Richard
- Gangsters



1%

Character:

- **Prof. Norman**



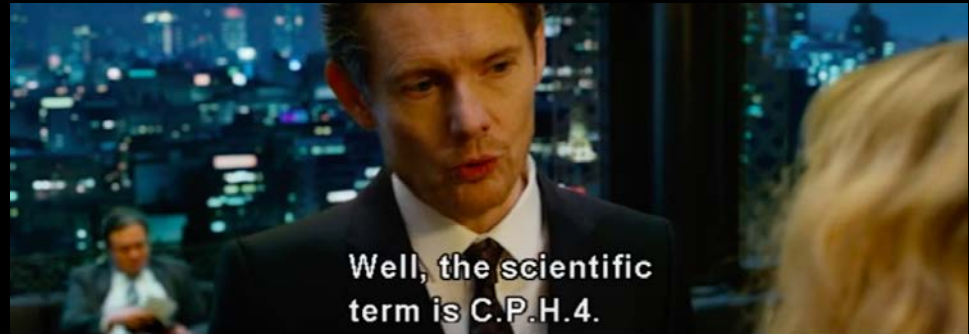
This is where life
as we know it begins.

10%

Lucy Absorbs C.P.H.4

Characters:

- **Bad Scientists**



20%

Lucy's Development:

- Control Herself (Colonizing Brain)
- Feel Everything
- Control Basic Electromagnetic Waves
- No Pain, Fear, Desire
- Change Appearance



(SPEAKING MANDARIN)

30%

Lucy's Development:

- Control Animals
- Feel Others
- Interfere with Others

Characters:

- Police Officer



40%

Lucy's Development:

- Control Others' Movement
- Self-Dissolve



50%

Lucy's Development:

- Control Others' State
- Control Electromagnetic Waves
- Control Matters



60%

Lucy's Development:

- Create Space



70%

Lucy's Development:

- Transform



80%

Lucy's Development:

- Control Space
- Travel Through Time



99%

Lucy's Development:

- See the beginning of Life



100%

Lucy's Development:

- Becomes An USB
- Be Present at Everywhere



THESIS STATEMENT

The development of **technology** falls into hands of different people with different **intentions** and **use**, resulting in human running **risk** caused by its **uncertainty**.

Analysis

Erin
Helen

Binary of *Lucy*

Science

Risk



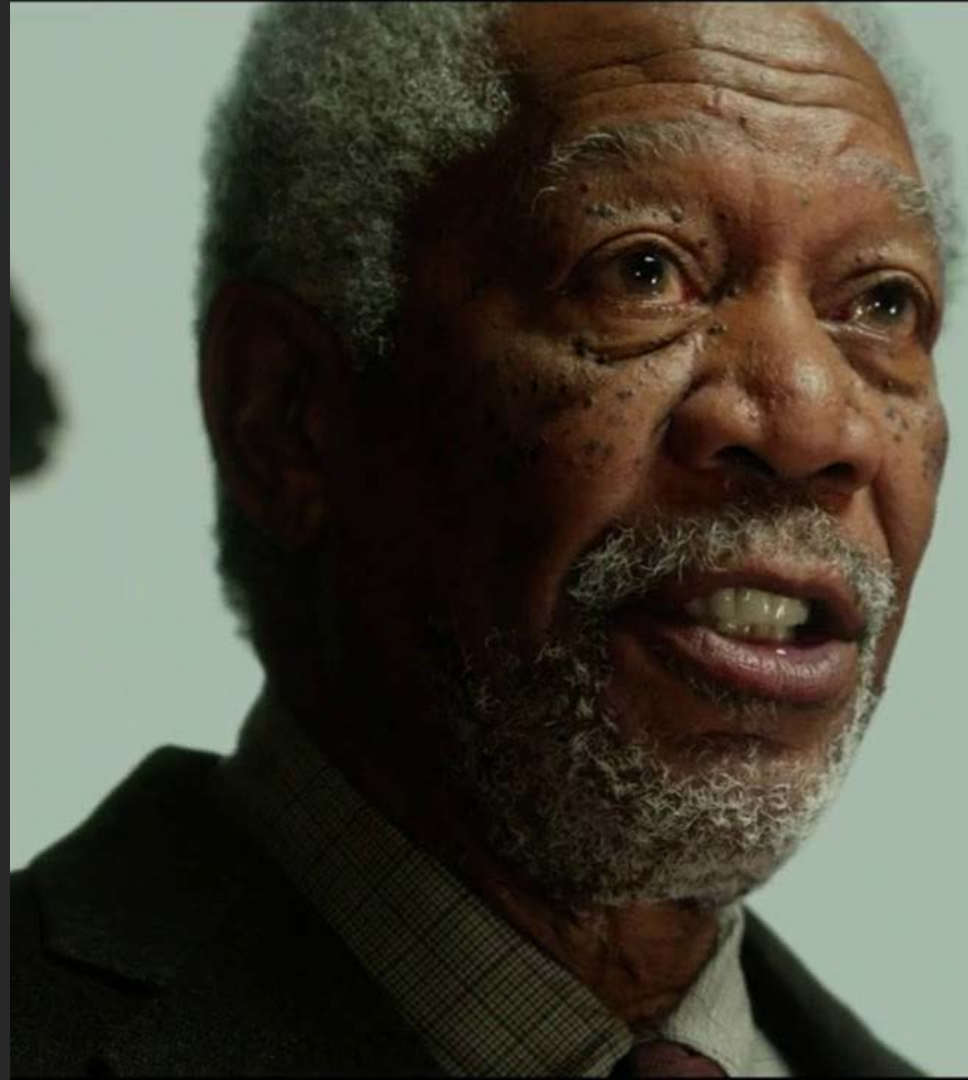
Network

→ Scientific Invention

→ Two networks in *Lucy*

- ◆ **Science (knowledge)**
- ◆ **Crime (greed)**

Science Network

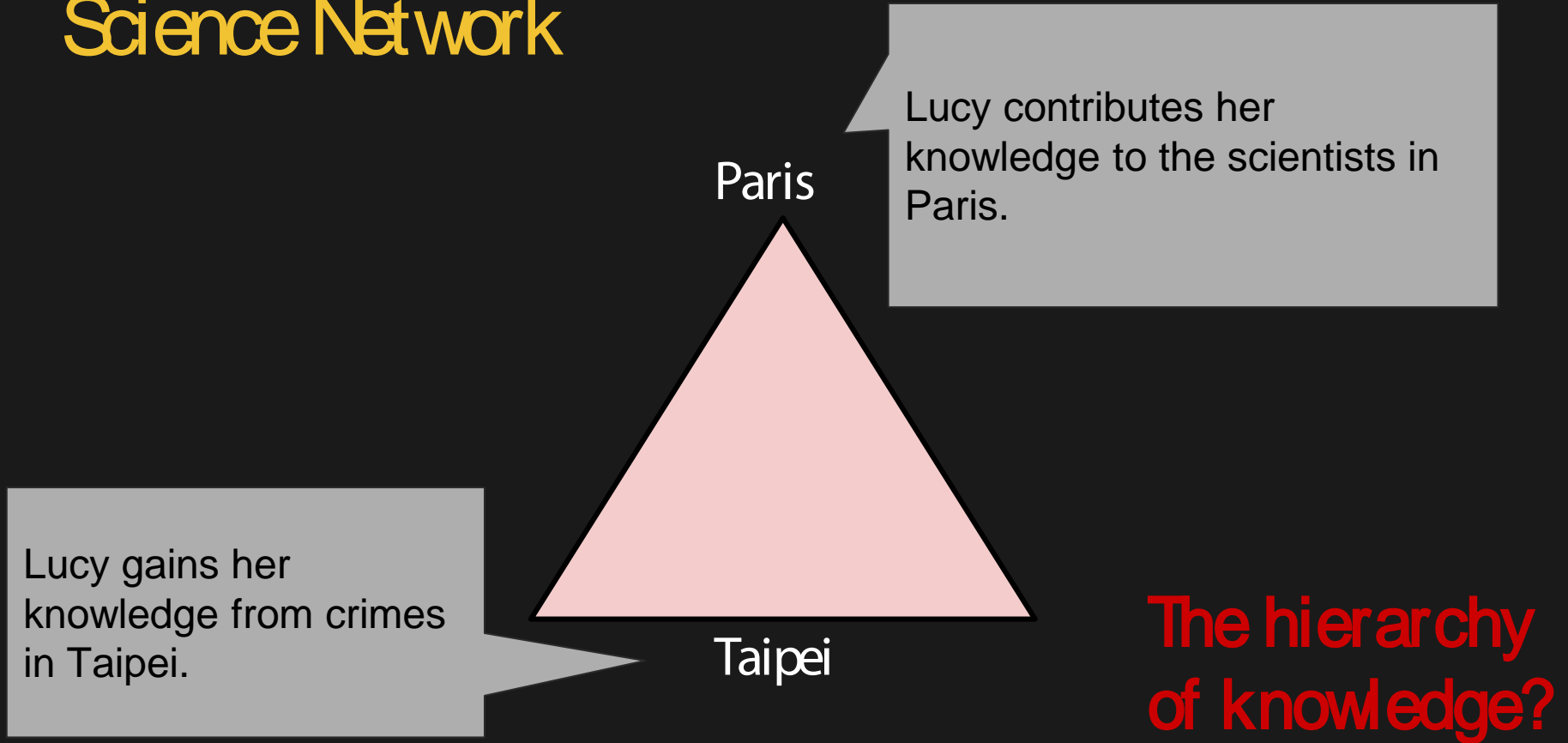




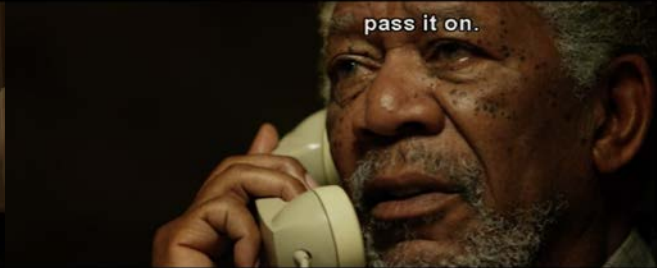
Science Network

- Knowledge
 - Willing to share with the world
- “Good scientists” and Captain Del Rio in Paris
- Suggesting Lucy to pass her knowledge on
- Positive consequences

Science Network



Professor Norman's attitude toward knowledge and life



→ Life's highest purpose is to pass on what we've learned.

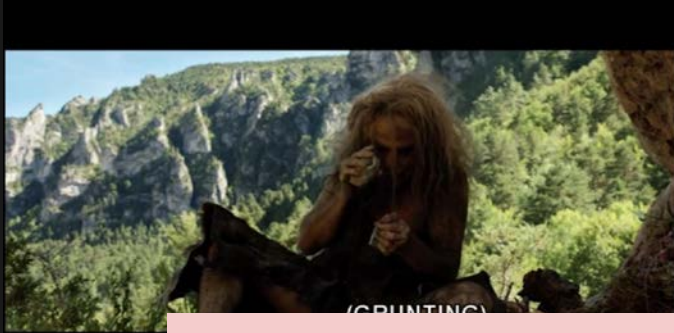
Captain Del Rio



Consequences

- Lucy decides to pass on her knowledge
- The scientists in Paris gain the knowledge from Lucy

Examples of human's inventions on the history



Calculating the knowledge by passing it on



Negative influences?



Crime Network





Crime Network

Greed

- the profit brought by the product is intriguing
- Mr. Jang & gangsters in Taipei
- drug selling & drug-trafficking proliferation
- negative consequences

The drug- CPH4



a volatile substance produced in minute quantities by pregnant women during their sixth week of pregnancy to provide fetuses with the energy to develop

Mr. Jang and his team- "by hook or by crook"



Doesn't care whatever it takes to achieve their goal, which is to make profit from illegal drug trade.

(the intention behind these behaviors?)

Gangsters in Taipei



Shielding the Koreans' illegal drug trade and take advantage from doing so.

→ drug-trafficking proliferation

→ survival?

Consequences

- innocent people dying
- domino effect
- losing everything



Is Lucy that good?



She exists in both networks.

Lucy



The effects of CPH4 caused her to lose psychological characteristics, feelings, and behavioral traits of humankind.

Sacrifices on Lucy's journey?



You wouldn't have been able to save him anyway.



Science V.S. Crime Networks

Knowledge v.s. Greed

- Science inventions trigger risks, that is the uncertainty of human's positive or negative intentions or uses.
- Construct the story networks of *Lucy*



Do you think these two networks are worth all the sacrifices during the process? Or do you think the sacrifices are all necessary?

Hidden Meanings in *Lucy*

Ashley Lin

The Law of the Jungle



The Law of the Jungle



Regular humans act like animals in the jungle.



Lucy is a regular, animalistic human who hasn't reach a higher level of evolution.

The weak is the prey of the strong!

Orientalism (東方主義)

"Western ideas about the Middle East and about East and Southeast Asia, especially ideas that are too simple or not accurate about these societies... ." *Cambridge Dictionary*



Korean



Taiwanese



Chinese dragon

Mixture of Eastern signs

Global Network (TPE+FRA) - Taipei

- Promotion during his other film called “The Fifth Element”
- Fast- paced Asian city
- Not many movies have been shot in Taipei
- Sponsorship from Taipei City Hall



Global Network (TPE+PRA) - Paris

- Luc Besson was born in Paris
- To complete this film, Luc Besson spent nine years writing scripts and developing plots with 12 different nobel prize winners.
- University → Palace of knowledge





Do you recognize the Taipei in the film
as the city you are familiar with?

Lucy v.s Network

Amanda Lin

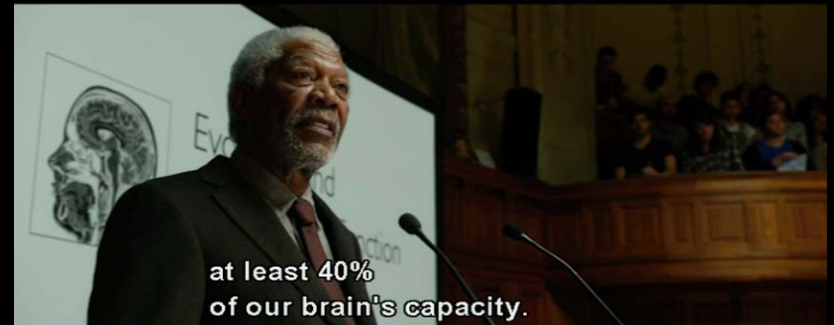
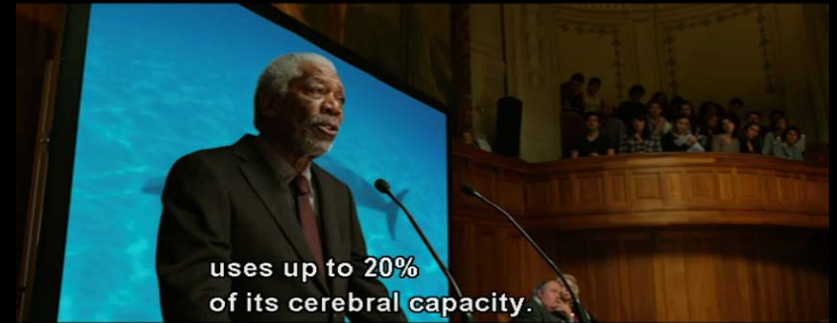
Human's Brain Development

- Professor Norman's speech

Control our own body (20%)



Control other people (40%)



- The imagination and possibility of brain capacity
- Lucy's brain development is beyond theories.
- Remembering everything, controlling everyone
- She is not constrained by space or time.



Lucy's Brain Development

1%

40%

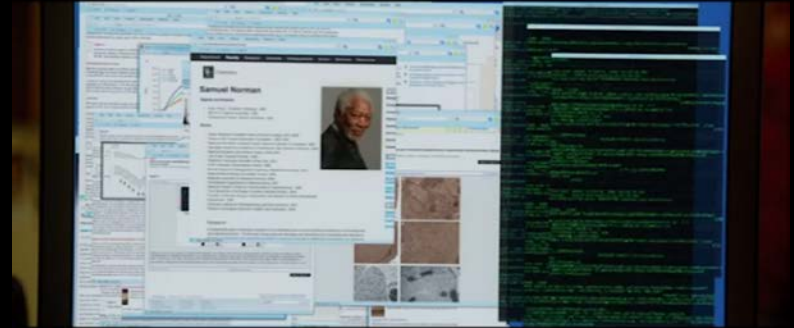
- Why does the director chose these abilities to present brain development?

99%

100%

- Lucy becomes more like a computer

→ Digest the informations in seconds



- Lucy has the power of the Internet

→ Connect the different electronic devices in Paris



Does the director want to say that the Internet can do impossible things?

→ Internet of Things (I.o.T) 物聯網

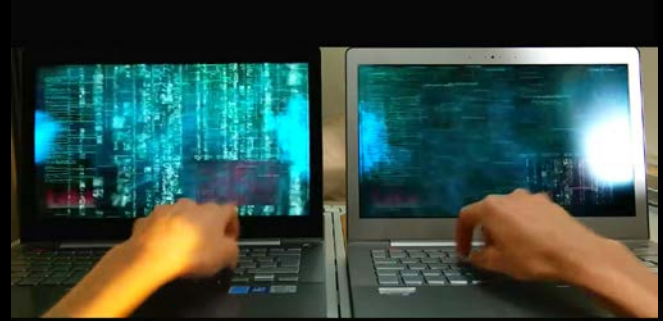
1. Information trading
2. Big data
3. Upgrade the software
4. Providing the service
5. Sharing the hardware

- Information trading & Big data

→ Lucy:

1. Get the access to every network
2. See everyone's communication system

1. Switch the radio into the conversation she wants to hear



**Problem: Privacy*

I.o.T

→ Hackers

→ Daily life could be watched or tapped through computer or phone

Ending's Meaning- U.S.B

Lucy wants to pass her knowledge to those who would use it properly.





What do you think about the ending? Why Lucy becomes an U.S.B?

Film Techniques

Jbanna Chen

Affected by Hollywood

- Crime, thriller, action
- Commercial
- Entertaining
- Hero / Heroine (A woman with a gun?)



Aestheticization of violence



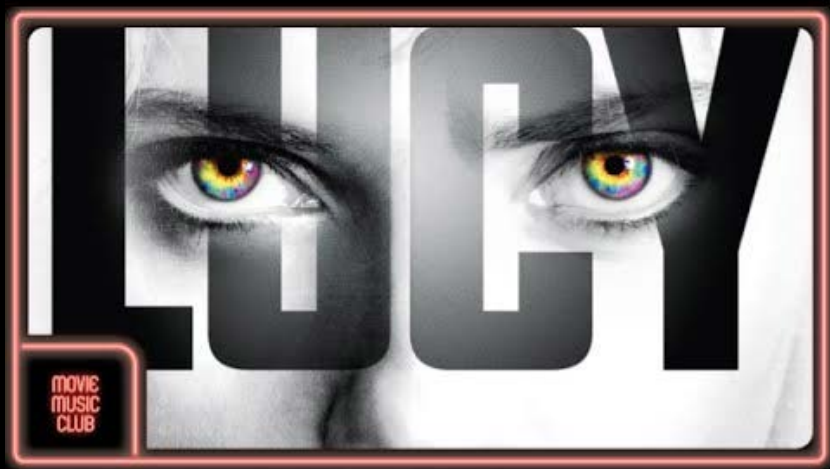
(GASPS)

CGI and VFX

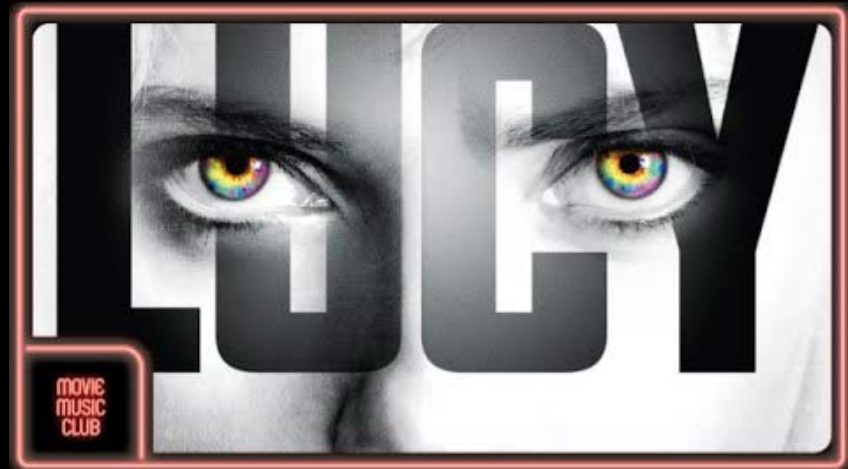




Music



Mr. Jang's Bloody Suite



I Am Everywhere



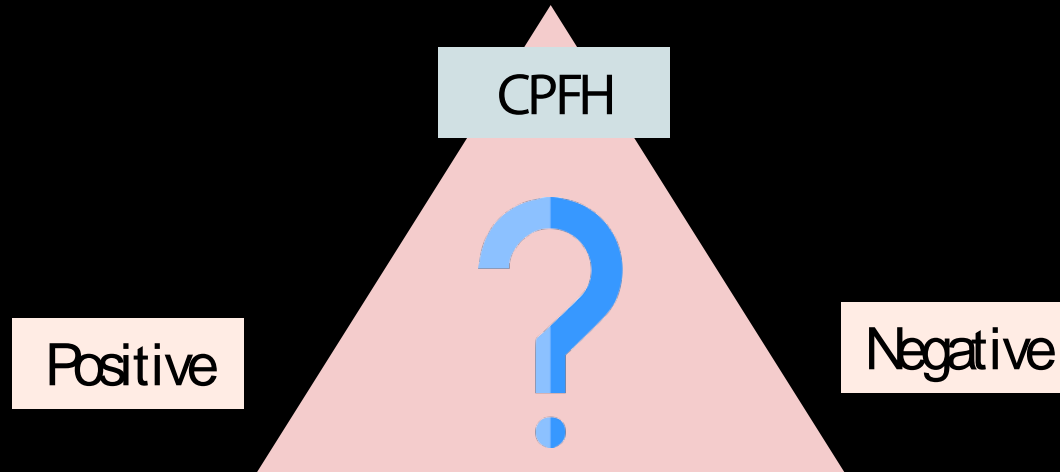
What would happen if Lucy is not
filmed this way (thriller action) ?

Conclusion

404110548 Ann Lin

Risks

Technology & Knowledge



- Convenience
- Ex. Internet of Things (I.o.T) 物聯網
- Pass down the knowledge to the next generation

- Science crime
- The hierarchy of knowledge
- Privacy problem
- Gangster

Nootropics (Smart Drugs) in Real Life

most often used to boost memory, focus, creativity, intelligence and motivation



Enhance brain activity



Make you brisky



Make you very active

Nootropics (Smart Drugs) in Real Life

most often used to boost memory, focus, creativity, intelligence and motivation



Enhance brain activity



Nootropics (Smart Drugs) in Real Life

most often used to boost
memory, focus, creativity,
intelligence and motivation



Make you very active



Too much at once

- ❌ Brain chemistry alterations
- ❌ Cognitive deficits

Frequency of use

- ❌ Brain fog
- ❌ Headache
- ❌ Dependence





What are the other risks which we can observe in this movie may happen in the real life?

References

[https://en.wikipedia.org/wiki/Lucy_\(2014_film\)](https://en.wikipedia.org/wiki/Lucy_(2014_film))

<http://mypaper.pchome.com.tw/cde1028/post/1329714193>

<https://screenrant.com/lucy-2014-movie-behind-scenes-secrets/14/?v=6&n=f>

<https://tw.answers.yahoo.com/question/index?qid=20090520000010KK00357>